



## A CLEANER START FOR WEED-FREE FIELDS

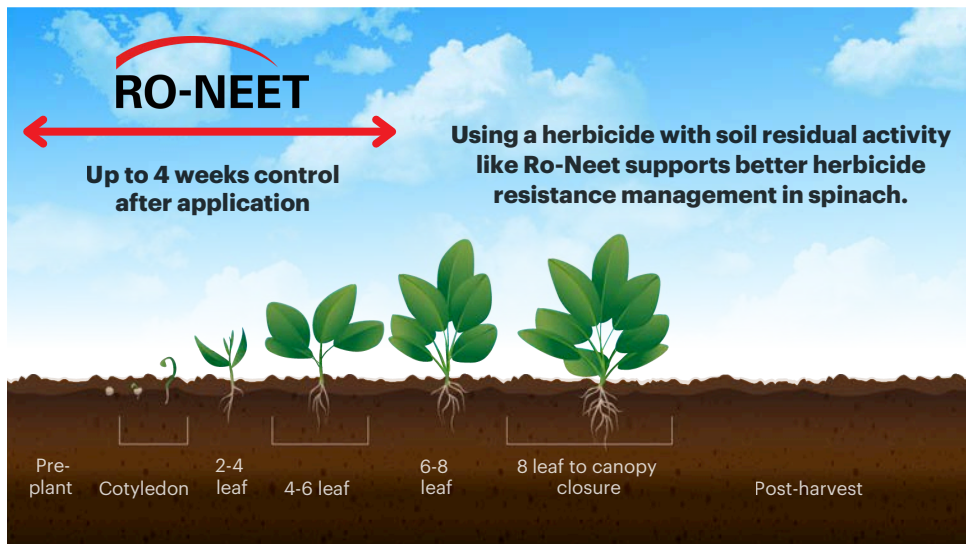
Ro-Neet® herbicide provides up to four weeks of early-season control of annual grasses and small-seeded broadleaf weeds in spinach, garden beets and sugar beets.

Ro-Neet is a demonstrated performer against yield-robbing, resistant weeds, including amaranth spp. such as redroot, waterhemp, and Palmer amaranth, as well as nutsedge, nightshade, lambsquarters, ryegrass, wild oat and foxtails.



# RO-NEET

### RO-NEET RESIDUAL CONTROL TIMELINE FOR SPINACH



### PERFORMANCE BENEFITS

- Easy-to-use 6-lb liquid concentrate formulation
- Versatile application timing for fall or spring application
- Flexible rates for varying weed species, soil textures and organic matter



Spinach



Garden Beets



Sugar Beets



# RO-NEET

<b>REI</b>	48 hours
<b>PHI</b>	N/A
<b>Restricted Use</b>	No
<b>Packaging</b>	2 x 2.5 gal
<b>EPA#</b>	74530-16

## CROPS

Garden Beets  
Spinach  
Sugar Beets

See label for detailed instructions regarding use rates, application guidelines and restrictions by crop and geography.

## PRIMARY WEEDS CONTROLLED (OR SUPPRESSED)

Annual Bluegrass, Annual Ryegrass, Barnyardgrass, Crabgrass, Deadnettle, Henbit, Foxtails, Lambsquarters, Nightshade (black, hairy), Nettleleaf Goosefoot\*, Nutsedge (purple, yellow), Purslane, Redroot Pigweed, Shepherdspurse, Small Stinging Nettle/Burning Nettle, Velvetleaf\*\*, Volunteer Barley, Wild Oats

\* California excluded.

\*\* Partial control or suppression only.

Ro-Neet will not control established or germinated weeds present at application. Existing nutsedge stands must be turned under/chopped before treatment.

## USE RESTRICTIONS

- Only apply 1 treatment per growing season (fall or spring except as noted on the label).
- Tank mix with fungicides, insecticides or herbicides only as recommended.
- For maximum control benefits, plant immediately after application.
- Incorporate into soil immediately at a depth of 2 to 3 inches (CA only: 3 inches)
- Fall treatments should occur before ground freezes.

<b>Brand Name</b>	Ro-Neet®
<b>Category</b>	Herbicide
<b>Active Ingredient</b>	Cycloate
<b>Crops</b>	Garden beets, spinach, sugar beets
<b>Site of Action</b>	Group 8
<b>Formulation</b>	Emulsifiable concentrate
<b>AI/Gallon</b>	Cycloate 6.0 lb a.i./gal
<b>Applications</b>	Preplant incorporated
<b>Rates</b>	1/2 to 2/3 gallon per acre. See label for rates by crop.
<b>Weed Spectrum</b>	Broadleaf and grass species
<b>Signal Word</b>	Caution

Crop	Timing	Gallons/A	Remarks
Garden Beets	Pre-plant, at planting or immediately post-planting	1/2 to 2/3	Use on mineral soils only. Use lower rate on sandy soils. Use higher dosage rate on heavier soils. When applying Ro-Neet in combination with fluid fertilizer, do not apply over 150 lbs actual nitrogen per acre.
Spinach	Pre-plant, at planting or immediately post-planting	1/2 <sup>1</sup> 2/3 <sup>2</sup>	Use on sandy mineral soils only.
Sugar Beets*	Pre-plant, at planting or immediately post-planting	1/2 to 2/3	Use on mineral soils only. Use lower rate on sandy soils. Use higher dosage rate on heavier soil. Injury may result in highly saline or alkaline soils.
	Fall application	2/3	Only apply in states of ID, MN, MT, ND, OR or WY. Apply and incorporate in late fall before ground freezes.

Maximum of 2/3 gallon (4 lbs active ingredient) per application and one application per crop cycle.

<sup>1</sup> For use in AR, CO, CT, DE, IL, ME, MD, MA, MS, NH, NJ, NY, NC, OH, OK, PA, SC, TX, VT, VA and western TN. For use in spinach in the states of AZ, OR and WA please reference specific SLN labeling.

<sup>2</sup> CA only.

\*Only 1 application per growing season. If Ro-Neet is applied in the fall, do not reapply the following spring.



For more information, visit [HELMcrop.com](https://www.HELMcrop.com).

HELM Crop Solutions | 401 E. Jackson St. | Suite 1600 | Tampa, FL 33602  
P: 813.621.8846 | F: 813.621.0763 | [UScrop@helmag.com](mailto:UScrop@helmag.com)

Always read and follow label directions. Ro-Neet® is a registered trademark of HELM Agro US, Inc. HELM® is a registered trademark of HELM AG. ©2026 HELM Agro US, Inc.